

taekni
Empowering Performance

COMPANY**PROFILE**

Taekni Sdn Bhd 201601037903 (1208844-H)

OUR STORY



“We are driven by a passion for excellence and a commitment to empowering our clients' performance.”

Syed Mubarak Wan Long
Managing Director

Taekni Sdn Bhd was founded in Miri, Sarawak by Syed Mubarak with the vision to become a leading provider of Marine Engineering and Maintenance Services for the Oil and Gas Energy Industry. With a commitment to innovation, efficiency, and excellence, Taekni has grown to become a trusted partner to leading oil and gas companies in Malaysia.

"Empowering Performance" reflects our commitment to delivering customized solutions that exceed our clients' expectations. We believe that by empowering our clients' performance, we can help them achieve their goals and build a better future for the oil and gas industry in Malaysia and beyond.

At Taekni, we pride ourselves on our ability to provide comprehensive Marine Engineering and Maintenance solutions, including vessel maintenance and repair, rigging and lifting solutions, engineering and fabrication, and project management. Our experienced team of engineers and technicians are equipped with the latest tools and technologies to deliver innovative and cost-effective solutions.

We are committed to promoting sustainable practices and reducing our environmental impact, and our safety and compliance standards are second to none. We take a client-centric approach to every project we undertake, working closely with our clients to understand their unique needs and requirements and delivering customized solutions that are tailored to their specific goals.

100% OWNED & MANAGED BY **BUMIPUTERA**



RM1,000,000.00 PAID-UP CAPITAL

MORE THAN RM40,000,000.00 REVENUE SINCE INCORPORATED

14 NOVEMBER 2016

VISION

To become the most reliable and trustworthy service provider that can help businesses and their organizations compete on a global scale.



MISSION

Embarking operational excellence to industry players and elevate organization performance.



GUIDING VALUES

1. Fast Response Time
2. Continuous Improvement
3. Team-Oriented
4. Safety & Environment

EMPOWERING HSE PERFORMANCE

Taekni is committed to prioritizing quality and protecting health, safety, and the environment.



HSE VISION

To foster a culture of excellence in Health, Safety, and Environment by empowering employees, customers, and the public.



HSE MISSION

To provide the best health and safety for Taekni's employees, customers, and the public while also protecting the environment at all times.



“

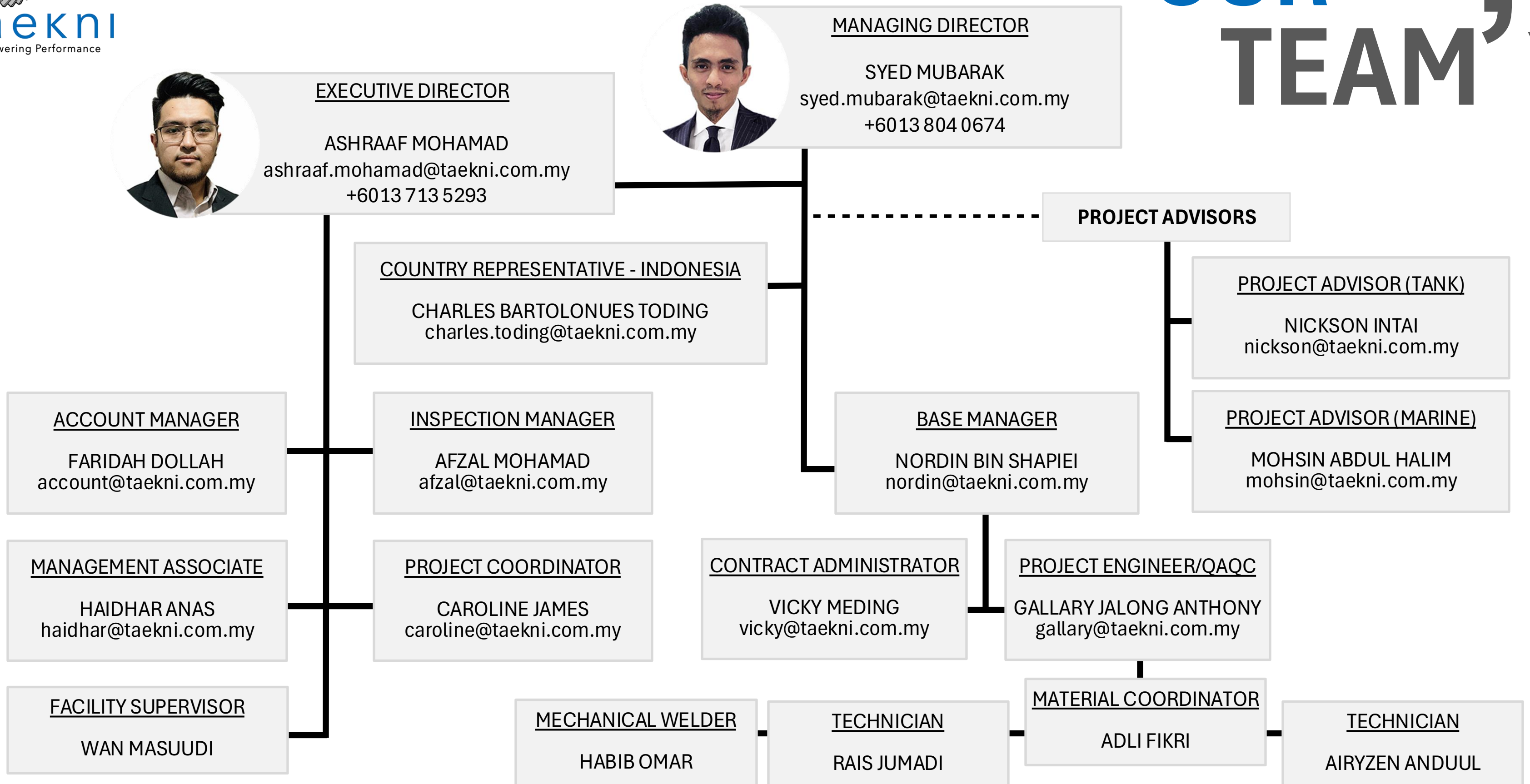
"Safety isn't a priority; it's a value woven into the fabric of TAEKNI."

Ashraaf Mohamad
Executive Director



8 YEARS IN OPERATION WITH **0 (ZERO)** LOST TIME INJURY (LTI)

AS AT 14 NOVEMBER 2024



OUR” SERVICES



Ship / Offshore Vessel Broker & Consultant

- Vessel Brokerage
- Technical Due Diligence & Advisory
- Client Reps & Secondment
- Vessel Marine Assurance
- Vessel Inspection & Condition Survey
- Offshore Transportation and Installation (Minor Structure)
- Offshore Marine Spread Services



Above Ground Storage Tank / Offshore Vessel Tank Cleaning & Maintenance

- Above Ground Tank and Offshore Tank/Vessel Cleaning and De-sludging Services
- Above Ground Tank Condition of Fitness Assessment
- Above Ground Tank and Vessel Survey, Inspection and Repair Services
- Blasting & Painting
- Tank/Vessel Repair & Maintenance



Offshore Floating Facilities Repair & Maintenance

- Buoy Repair Services
- Mooring Equipment Supply
- Single Point Mooring / Single Bouy Mooring Maintenance Services
- Minor Structural Fabrication and Repair Services (On Shore)

OUR ” SERVICES



Civil Engineering & Infrastructure Maintenance Services

- Civil Consultancy Services
- Civil Works & Maintenance
- Grounds Maintenance Services
- Marine Systems Repairs & Services
- Fabrication & Construction
- Integrated EPC/EPCC/EPCIC
- Offshore Maintenance, Construction & Modification (MCM)



Electrical/Mechanical Engineering Equipment & Services

- General Electrical Services - Cathodic Protection Services
- Electrical Motor Maintenance - Explosion Proof
- Electrical Motor Maintenance - Non- Explosion Proof
- Transformers & Generators Maintenance – Generator Rotating Equipment Services - Engines
- Machining & Fabrication Workshop
- Hoisting & Lifting Services - Wire Rope



Geological, Geophysical & Geotechnical Services

- Positioning - Onshore
- Fluid Sampling Services
- Specialized Sample Analysis
- Electromagnetic Survey - Marine
- Survey Vessel
- Marine Seismic Data Acquisition - 2D/3D/4D
- Offshore Soil Investigation
- Site Investigation - Onshore



PETRONAS SWEC CODE

Ship / Offshore Vessel Brokerage, Repair, & Consultation

21121800S	Ship Brokers
21121916S	Other Shipping Agency Services
21121517S	Pilot Boat (Vessel Operator)
21121626S	General Ship Repairs - Electrical & Electronic
21121632S	Main Engine - Specialised Repairs
21121615S	Auxiliary Engine - Specialised Repairs
25131200S	Onshore Catering/Office Food & Refreshment
11161000S	Jetty Maintenance
21121624S	Cargo Pumping System - Submerged
21121612S	Automation/Control & Instrumentation Electrical, Electronic, Pneumatic, Hydraulics

Above Ground Storage Tank / Offshore Vessel Tank Cleaning & Maintenance

21122000S	Vessel Cleaning Services
21121641S	Tank Cleaning Equipment
24241011S	Desludging, Recovery & Cleaning
21121224S	Specialised Survey-Quantity Surveying Services
21121212S	Cleaning & Disposal Services
18161100S	Spill Control Support & Clean-up Services
24222100S	Rotating Equipment Leasing & Rentals

Offshore Floating Facilities Repair & Maintenance

11161200S	Single Point Mooring System
23141900S	Vessel (FSO/FPSO) Inspection
11161100S	Manpower, diver, materials, consumables, and equipment necessary for inspection, troubleshooting, repair, maintenance, change-out, and overhaul of SBM System .

PETROS' PLWC

Ship / Offshore Vessel Brokerage & Consultation

SJ600001	Removal & Disposal of Debris & Metal Scrap
SK100002	Marine Warranty Survey
SK400006	Naval Architecture & Marine Engineering
SK400013	Subsea Engineering Services
SL600001	Marine Transportation - Accommodation Work/ Construction
SL600002	Marine Transportation - Anchor Handling Tug (AHT)/ Anchor Handling Tug & Supply (AHTS)/ Tow Tugboat
SL600003	Marine Transportation - Diving Support Vessel
SL600004	Marine Transportation - Dumb/ Flat Top/ Transportation Barge
SL600005	Marine Transportation - Fast Crew Boat/ Supply Crew Boat
SL600008	Marine Transportation - Pilot Boat
SL600010	Marine Transportation - Safety Standby/ General Purpose/ Utility Vessel
SL600011	Marine Transportation - Straight Supply Vessel
SL600012	Marine Transportation - Tug Vessel
SL900001	Ship Brokers



PETROS' PLWC

Above Ground Storage Tank / Offshore Vessel Tank Cleaning & Maintenance

SH500002	Spill Control Support & Clean- up Services
SM110001	Atmospheric Storage Tank - Cleaning, Repair & Maintenance
SM110002	Atmospheric Storage Tank - Desludging, Recovery & Cleaning
SN400008	Storage Tank Inspection
SL120001	Vessel Cleaning Services
SL700032	Marine/Ship Repairs & Maintenance - Tank Cleaning Equipment

Ship / Offshore Vessel Repair & Maintenance

SL300004	Marine Operations Services - Fuel Monitoring System
SL300006	Marine Operations Services – Marine Inspection/ Audit/ Survey
SL300007	Marine Operations Services - Marine Vessel Salvage Services
SL300012	Marine Operations Services - Specialized Survey - Hull & Machinery Survey
SL300013	Marine Operations Services - Specialized Survey - Machinery Survey for Safety
SL500001	Marine Services - Lashing, Mooring/ Unmooring & Liftings
SL700001	Marine/Ship Repairs & Maintenance - Air-Conditioning & Refrigeration Repairs
SL700005	Marine/Ship Repairs & Maintenance - Auxiliary Engine - Governor
SL700006	Marine/Ship Repairs & Maintenance - Auxiliary Engine - Specialised Repairs
SL700007	Marine/Ship Repairs & Maintenance - Auxiliary Engine – Turbocharger

SL700011	Marine/Ship Repairs & Maintenance - Cargo Pumping System - Centrifugal
SL700012	Marine/Ship Repairs & Maintenance - Cargo Pumping System - Gear
SL700013	Marine/Ship Repairs & Maintenance - Cargo Pumping System - Screw
SL700015	Marine/Ship Repairs & Maintenance - Cargo Pumping System - Submerged
SL700016	Marine/Ship Repairs & Maintenance - Deck & Engine Cranes
SL700017	Marine/Ship Repairs & Maintenance - General Ship Repairs - Electrical & Electronic
SL700018	Marine/Ship Repairs & Maintenance - General Ship Repairs - Mechanical
SL700019	Marine/Ship Repairs & Maintenance - Heat Exchangers & Air Coolers - Plate
SL700020	Marine/Ship Repairs & Maintenance - Heat Exchangers & Air Coolers - Tube
SL700021	Marine/Ship Repairs & Maintenance - Main Engine - Automation
SL700022	Marine/Ship Repairs & Maintenance - Main Engine - Governor
SL700023	Marine/Ship Repairs & Maintenance - Main Engine - Specialised Repairs
SL700024	Marine/Ship Repairs & Maintenance - Main Engine - Turbocharger
SL700025	Marine/Ship Repairs & Maintenance - Navigation & Communications Equipment
SL700027	Marine/Ship Repairs & Maintenance - Reconditioning

PETROS' PLWC

Civil Engineering & Infrastructure Maintenance Services

SB100003	Project Management - Building, Structural & Civil Works
SB200001	Building & Structure Construction
SB200003	Onshore Marine Structure Construction & Maintenance
SB300001	Grounds Maintenance Services
SB400001	Jetty Maintenance
SK500001	Offshore - Fixed Structures Fabrication - Lightweight Fixed Structures
SK500007	Onshore - Pipeline
SK500009	Structural & Piping Fabrication/Welding Services - Metallic - Carbon Steel, Stainless Steel, Non- Ferrous, Internally Lined Pipe & etc.
SK500011	Tank/Tank Farms
SK700002	Offshore - Fixed Structures Fabrication - Lightweight Fixed Structures (EPC/EPCC/EPCIC)
SK700005	Onshore Facilities
SO100003	Maintenance & Repairs of Offshore Facilities
SO100005	Minor Onshore Fabrication

Electrical/Mechanical Engineering Equipment & Services

SE300002	Cathodic Protection Services
SE400001	Electrical Motor Maintenance - Explosion Proof
SE400002	Electrical Motor Maintenance - Non- Explosion Proof
SE600001	Generator
SJ500002	Machining Workshop
SM600010	Wire Rope
SM900006	Engines

Offshore Floating Facilities Repair & Maintenance

SB400002	Single Buoy Mooring (SBMs) System
SB400003	Single Point Mooring (SPM) System
SK800007	SBM & Subsea Structure
SN400010	Vessel (FSO/FPSO) Inspection

General Supply & Services

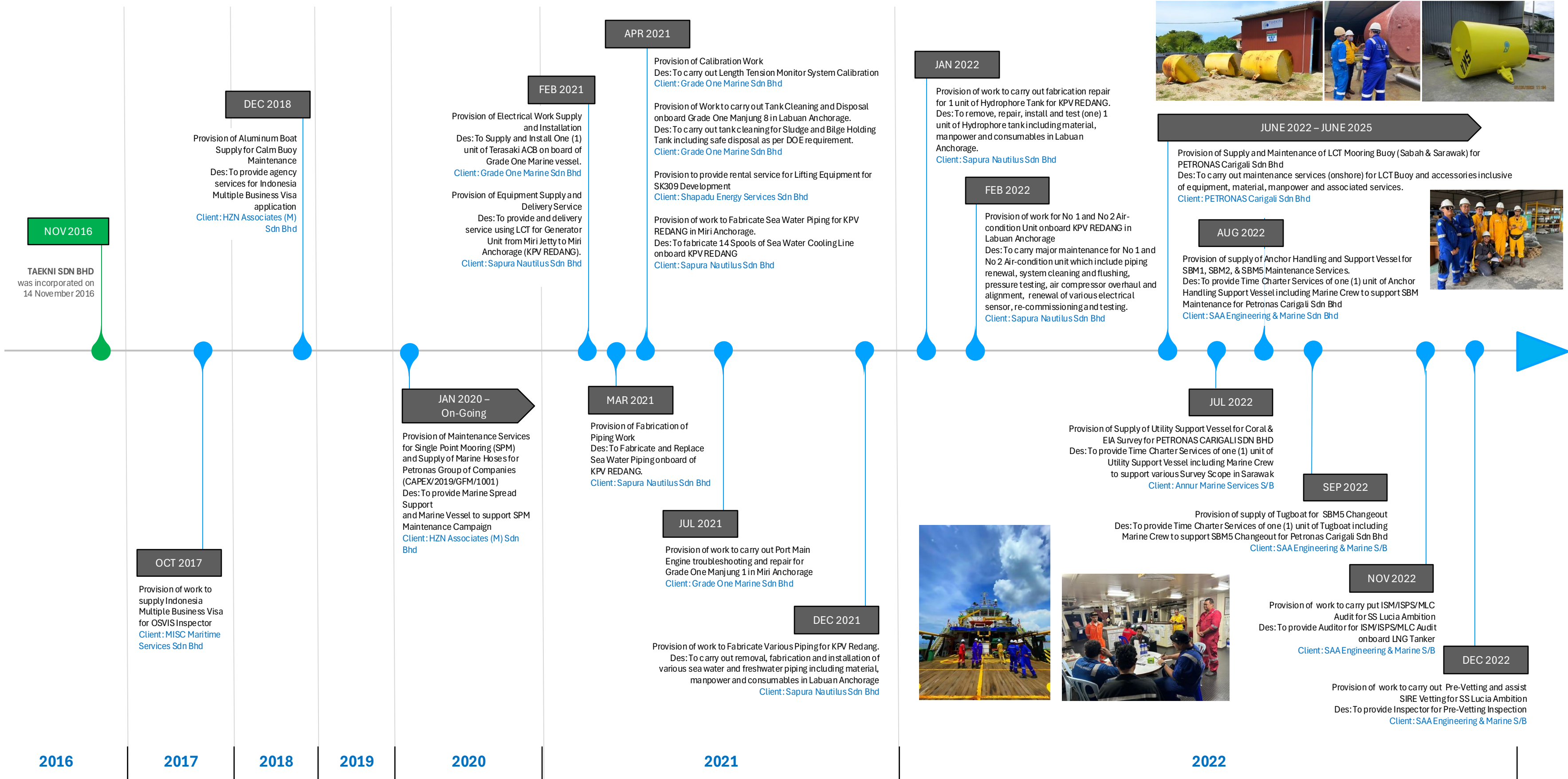
SA200002	Onshore Catering/Office Food & Refreshment
SA400003	Portacabins & Portable Toilets Leasing/Rental
SJ500003	Chillers & Freezers
SL200003	Cargo Transport & Freight Forwarding Services - Marine Cargo Transport

Geological, Geophysical & Geotechnical Services

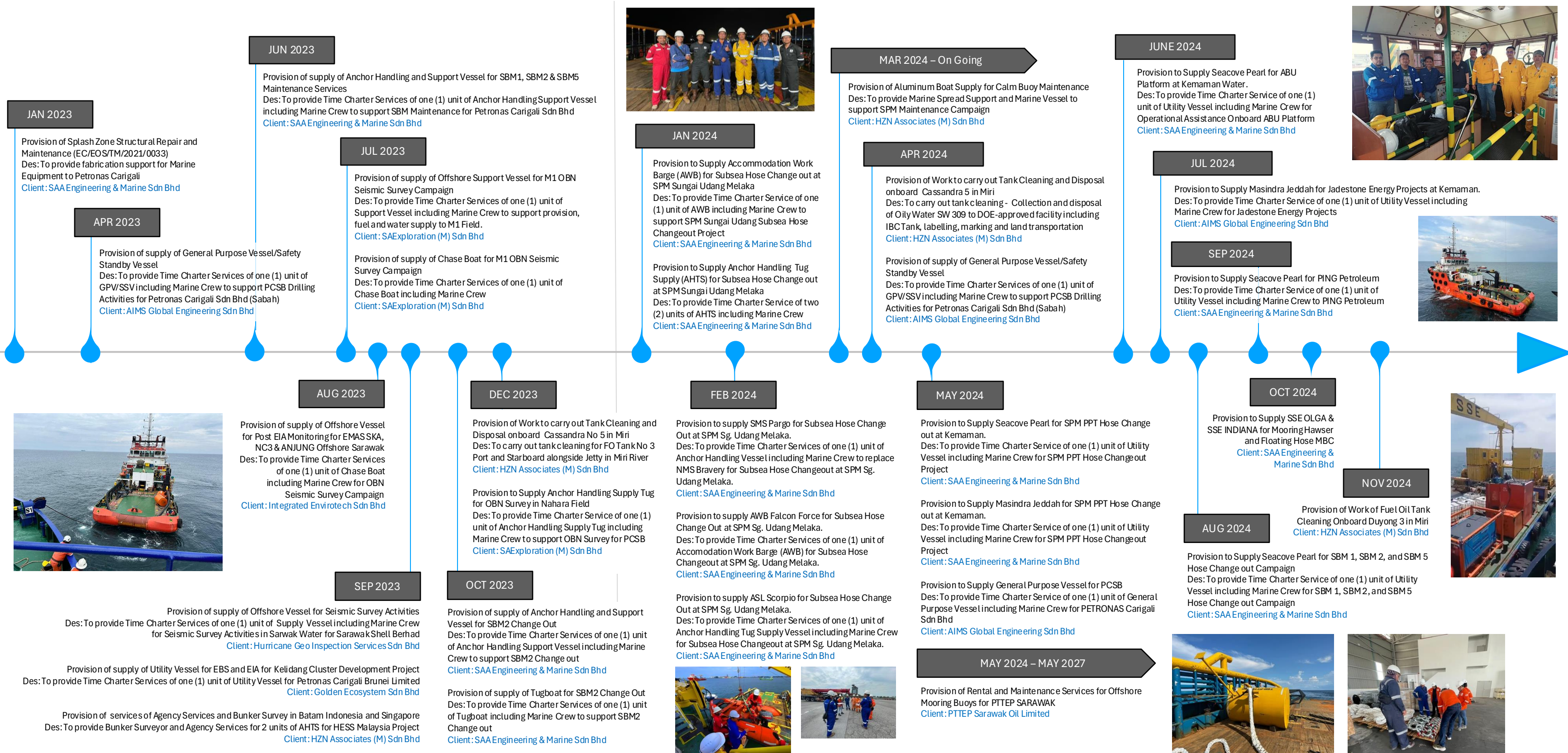
SG110002	Positioning - Onshore
SG130001	Fluid Sampling Services
SG130003	Specialized Sample Analysis
SG700004	Electromagnetic Survey - Marine
SG700008	Survey Vessel
SG800004	Marine Seismic Data Acquisition - 2D/3D/4D
SG900001	Offshore Soil Investigation
SG900003	Site Investigation - Onshore



PROJECT EXPERIENCE TIMELINES



PROJECT EXPERIENCE TIMELINES



TAEKNI Main Office (HQ)

**OUR ”
FACILITIES**



**Taekni Headquarters, Lot 1262, Senadin Venture Light Industrial Park,
Jalan Lutong - Kuala Baram, 98000 Miri, Sarawak, MALAYSIA**

TAEKNI Labuan Branch

**OUR ”
FACILITIES**



Lot 30505, Kampung Pantai Jalan Arsat, 87000, Labuan, W.P. Labuan, MALAYSIA

TAEKNI Bintulu Branch

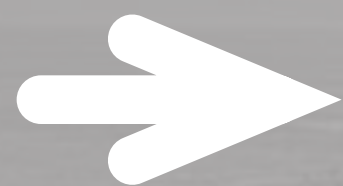
**OUR ”
FACILITIES**



Sublot 42, Lot 341, Block 33 Kemena Land District (Mile 8), 97000 Bintulu Sarawak



LET'S



CONNECT

TAEKNI SDN BHD (201601037903 / 1208844-H)

Taekni Main Office (HQ):

Lot 1262, Senadin Venture Industrial Park,
Jalan Lutong – Kuala Baram,
98000 Miri, Sarawak.

inquiry@taekni.com.my

Tel: +6085 65 000 1 | **Fax:** +6085 65 888 3

Taekni Labuan Branch:

Lot 30505, Kampung Pantai Jalan Arsat,
87000 Labuan, Wilayah Persekutuan Labuan.

Taekni Bintulu Branch:

Sublot 42, Lot 341, Block 33 Kemena Land
District (Mile 8), 97000 Bintulu Sarawak

www.taekni.com.my